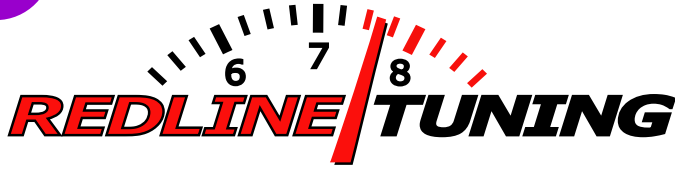




Manual Rev.
1.01
9/27/07

This manual is property of Redline Tuning LLC. Any unauthorized duplication or use without written permission from Redline Tuning LLC, violates Copyright laws. Copyright © 2003 Redline Tuning LLC. All Rights Reserved.



(2004 1/2+) Kia Spectra Hood QuickLIFT Installation Guide

Step 1 - Unpack QuickLIFT kit and verify contents.

Remove all items from the packing tube. You should have the following before beginning:

- * (2) Gas springs - Part No. RT-QL-200-4A
- * (8) 3/16" Multi-grip Rivets
- * (2) 3/16" Aluminum rivets (high adhesion - 3rd rivet for center hole in hood bracket)
- * (2) Ball-stud brackets
- * (2) Hood brackets - angled & ball stud pointing outward.
- * Printed Color Instructions
- * Gas Spring clips (these are already installed in the gas spring ball ends - remove before assembly)

DO NOT LOSE THE LOCKING CLIPS - they disappear when dropped!



Step 2 - Gather the required tools.

Please gather the following tools before you begin the installation:

- * Power Drill
- * 3/16" or indexed #11
- * Fine permanent marker or felt tip pen
- * Tape Measure or ruler
- * Hammer & center punch
- * Masking Tape
- * Rivet gun, capable of 3/16" rivets (most brands can handle this size)

Note: Only use the rivets supplied in the QuickLIFT kit.



Recommended: Craftsman standard or Swivel Riveter (shown - 974749) - \$9.99 to \$17.99

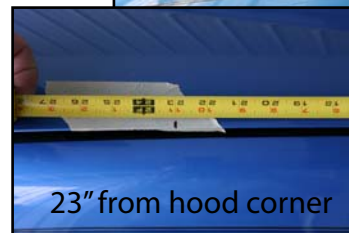
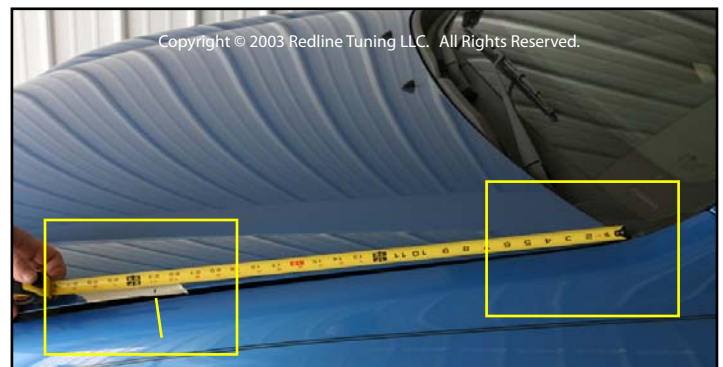
Any standard 3/16" capable rivet gun will work.

Step 3 - Mark centerlines for both hood and fender brackets.

A. Place a long piece of masking tape along the hood line as shown.

B. Using the permanent marker, measure from the hood's hinge corner and place a mark at **23"** on the hood tape - this will be used to mark the centerline of the hood bracket.

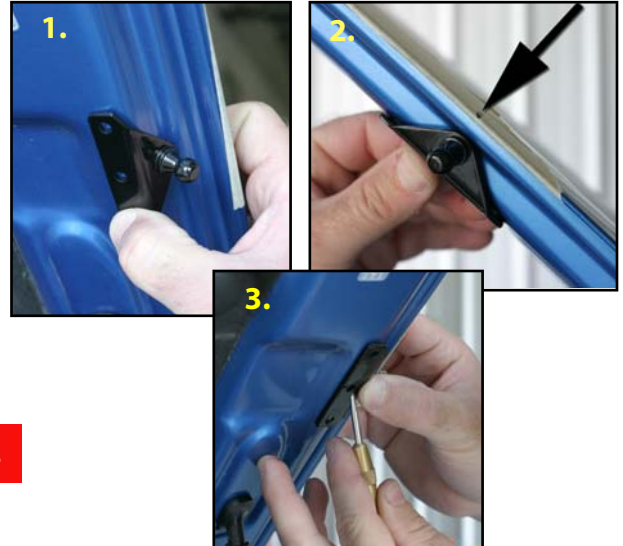
C. Double-check measurement.



Step 4 - Mark center hole for drilling.

A. Hold the hood bracket so that the ball-stud is aligned with the hood tape mark then mark the center of the middle hole using a permanent felt tip marker. Be sure the bracket is straight and sitting flat against hood's frame with the ball-stud pointing down and away from engine.

B. Set bracket aside. Using a center punch and a hammer, tap the center of the mark you just made (this indentation will help guide the drill bit). Place bracket back in place to be sure it is still centered where it should be.



Step 5 - Drill #11 indexed bit hole, or 3/16" hole.

A. Carefully drill the hole as shown to the right using a (#11 indexed bit) or (use 3/16" bit if #11 bit is not available).

If you do not have a #11 indexed bit, you can use the 3/16" bit, however you may have to test fit the rivet and slightly ream hole until the rivet fits tightly through bracket and hole - 3/16" is only a few thousands smaller than the #11 bit. Do not use any other drill bit sizes!

Wrap a piece of electrical tape around the drill bit about 1/4" from the tip to prevent the bit from denting the hood skin or use a drill stop on the drill bit. Use new and sharp bits!



Step 6 - Rivet center of bracket to hood - Aluminum rivet.

A. Hold the bracket in position as shown.

B. With the bracket lined up again, place the aluminum rivet through the bracket and hole with the long stem sticking outward - shown to the right. The rivet may require a few twists while pushing it in (only use the light aluminum rivet for the center holes).

C. Check to be sure your rivet gun has the 3/16" rivet head installed, then slide rivet gun onto rivet. While applying downward force on rivet and bracket, firmly squeeze riveter handle multiple times until rivet gun pops and snaps off the rivet stem.



Riveting Tips: Visit <http://www.redlinetuning.com/QL-tips.html>

Step 7 - Drill and rivet then repeat on upper and lower holes using the steel rivets

A. Reposition or rotate bracket into the proper position against hood lip. Carefully drill the upper and lower holes through bracket hole and frame - then rivet into place using the steel shafted rivets.

NOTE: Rivet center hole in bracket last using the supplied Aluminum rivet (slightly longer and silver in color) - this rivet is used to stabilize the bracket and give it extra strength.



Step 8 - Repeat steps 3-7 and install the passenger side hood bracket.

A. The hood has a symmetrical under structure. Repeat Steps 3-7 to install the upper passenger hood bracket. Take your time.

Step 9 - Position and mark first hole for driver's side fender bracket.

A. Hold the bracket in position as shown to the right with the ball-stud pointing inward toward the engine. The bracket should sit **1-7/8"** from the bolt's center to the edge of the bracket as shown. The bracket holes will be centered vertically on the raised fender lip.

Use the photos to right for exact placement.

B. Mark the first hole using a fine permanent marker.



Step 10 - Mark hole center before drilling the #11 or 3/16" hole.

A. Using a center punch and a hammer, tap the center of the marked hole. This will help guide the drill bit and keep it from wandering during the following step.

B. Drill the right hole at the marked position using a sharp **#11 or 3/16" drill bit**. **You will be drilling through both the fender lip and the frame below.**



Step 11 - Attach the right end of the bracket to fender.

A. Using a color matching paint, touch up the area where you just drilled the hole. Do not use a silicon underneath the bracket, paint will protect the hole.

B. Rivet the bracket into place.



Step 12 - Mark center with marker and indent with center punch.

- Using a permanent marker, mark the left or lower hole of the fender bracket.
- Using a center punch and a hammer, tap the center of the marked hole. This will help guide the drill bit and keep it from wandering.

Step 13 - Drill second hole and attach bracket.

- Carefully drill the hole as shown to the right using a **3/16" bit**. Drill through both bracket and fender lip, you do not need to move the bracket to drill.
- Rivet bracket into place.



Step 14 - Repeat steps 9-13 to attach the passenger fender bracket.

- Repeat Steps 9-13 to attach the passenger side fender bracket. The vehicle is symmetrical so the same locators can be used. Feel free to measure off of key areas to ensure a symmetrical installation.

Step 15 - Cycle both gas springs - then install

A. **CYCLE EACH GAS SPRING BEFORE INSTALLING** - firmly hold a gas spring with both hands by the thick cylindrical end - firmly press down on the floor or carpet and compress the spring. Do this to both springs. Have a friend hold the hood up. Remove the stock prop rod assembly at this time.

B. Install the driver's side gas spring with the cylinder at the top (large end up). Be sure that the sockets snap securely onto the ball studs. Have friend remain holding the hood up until Step 16 is completed. This procedure is most easily done if the hood ends are snapped on first and attach the lower fender ball studs last. Photos may not represent the gas spring direction indicated here.



***** Remove prop rod or hood will not close.**

Step 16 - Install the gas spring locking clips.

- Insert the gas spring locking clips and be sure that they are snapped on securely. These will lock the ball-studs onto the sockets and keep the gas springs in place.

